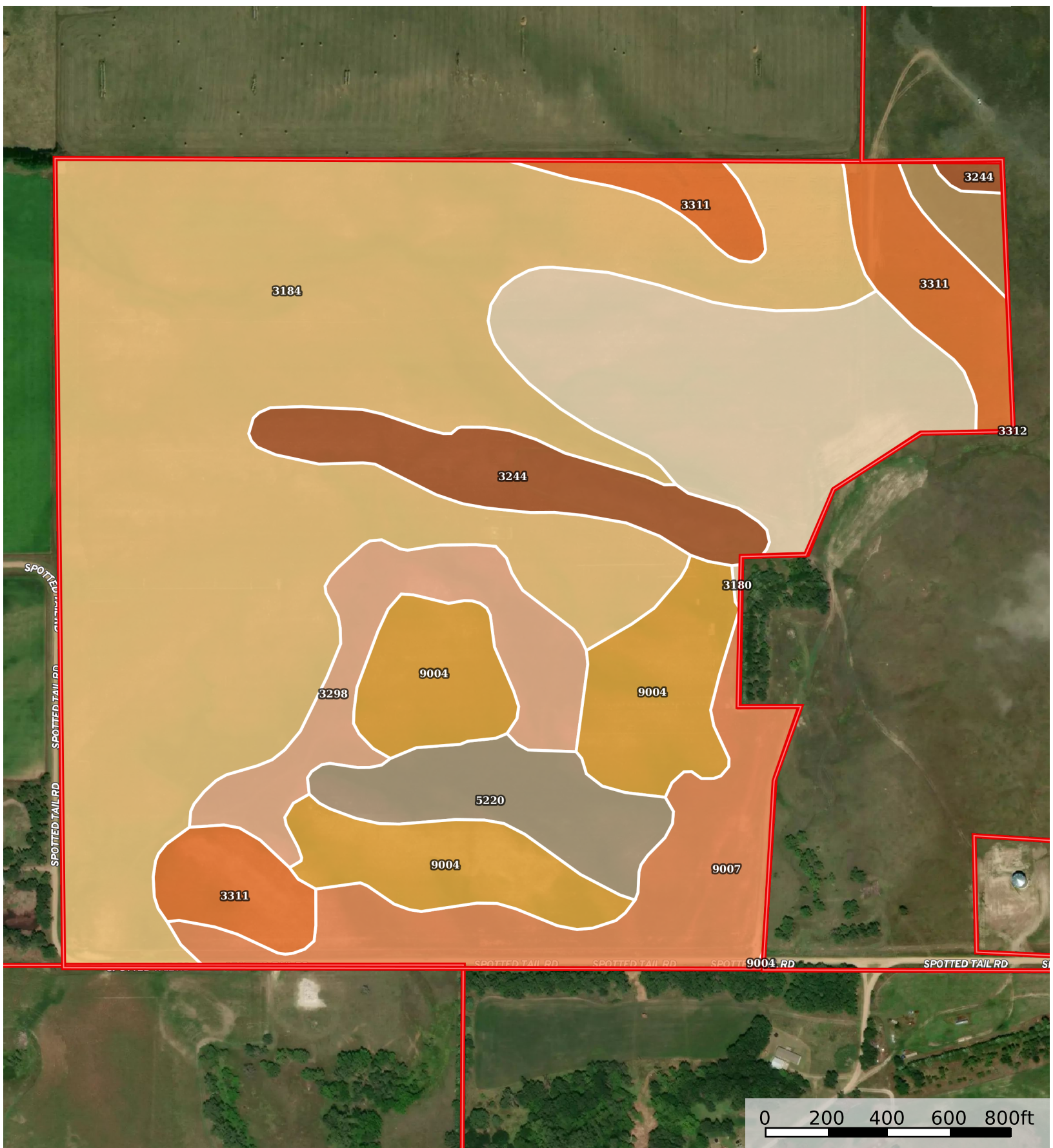


# 480 +/- Acres, Keya Paha County, NE - Auction

Nebraska, AC +/-



 Boundary

 Boundary 158.19 ac

SOIL CODE	SOIL DESCRIPTION	ACRES	%	CPI	NCCPI	CAP
3184	Jansen loam, 2 to 6 percent slopes	72.81	46.03	53	43	3e
3180	Jansen fine sandy loam, 0 to 2 percent slopes	19.11	12.08	0	47	2e
9004	Anselmo fine sandy loam, 3 to 6 percent slopes	17.2	10.87	54	40	3e
9007	Anselmo fine sandy loam, 0 to 3 percent slopes	12.89	8.15	59	41	2e
3311	Ronson-Anselmo fine sandy loams, 6 to 11 percent slopes	11.06	6.99	0	42	4e
3298	Ree loam, 0 to 3 percent slopes	8.8	5.56	85	52	2c
3244	Meadin gravelly sandy loam, 2 to 30 percent slopes	7.86	4.97	0	29	6s
5220	Onita silt loam, 0 to 2 percent slopes	6.85	4.33	94	60	2c
3312	Ronson-Anselmo fine sandy loams, 6 to 30 percent slopes	1.61	1.02	0	36	6e
TOTALS		158.19(*)	100%	43.87	43.4	2.95

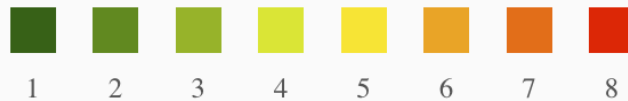
(\*) Total acres may differ in the second decimal compared to the sum of each acreage soil. This is due to a round error because we only show the acres of each soil with two decimal.

### Capability Legend

Increased Limitations and Hazards

Decreased Adaptability and Freedom of Choice Users

Land, Capability



'Wild Life'	•	•	•	•	•	•	•
Forestry	•	•	•	•	•	•	
Limited	•	•	•	•	•	•	
Moderate	•	•	•	•	•		
Intense	•	•	•	•			
Limited	•	•	•				
Moderate	•	•					
Intense	•						
Very Intense	•						

### Grazing Cultivation

(c) climatic limitations (e) susceptibility to erosion

(s) soil limitations within the rooting zone (w) excess of water